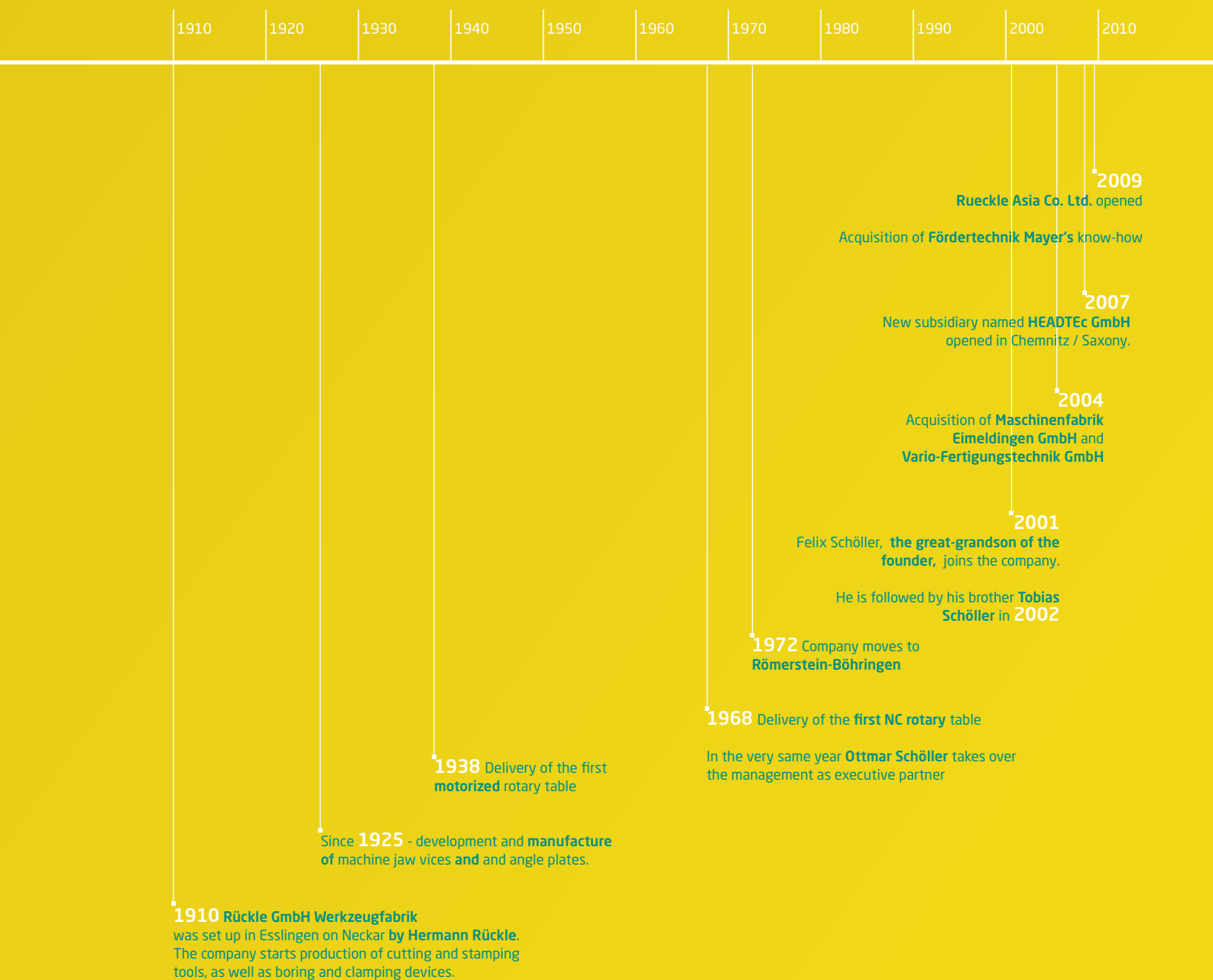


[www.rueckle-gruppe.de](http://www.rueckle-gruppe.de)

# Ingenious Rotary Table Systems

## Milestones



# Over 100 years: Always one rev ahead

The Rückle group, with a rich history that dates back almost seven decades, is one of the most venerable among all the current suppliers of rotary table systems for machine tools. Since then Rückle has been developing customized solutions and unique models, along with standard products, tried and tested a thousand times, always bearing in mind that it can do better than others. **This is why now the most important machine tool manufacturers worldwide appreciate and seek information about the professional competence of that traditional, Swabian, family-run company.**

Modular rotary tables are in the focus of our attention. They can easily be customized to machine requirements through our in-house engineering personnel. Rückle's products have been tried and trusted in production over several decades. Besides this customers benefit from a comprehensive, worldwide and reliable service which includes commissioning, maintenance & repair, documentation, warehousing and training.

## Beyond the commonplace

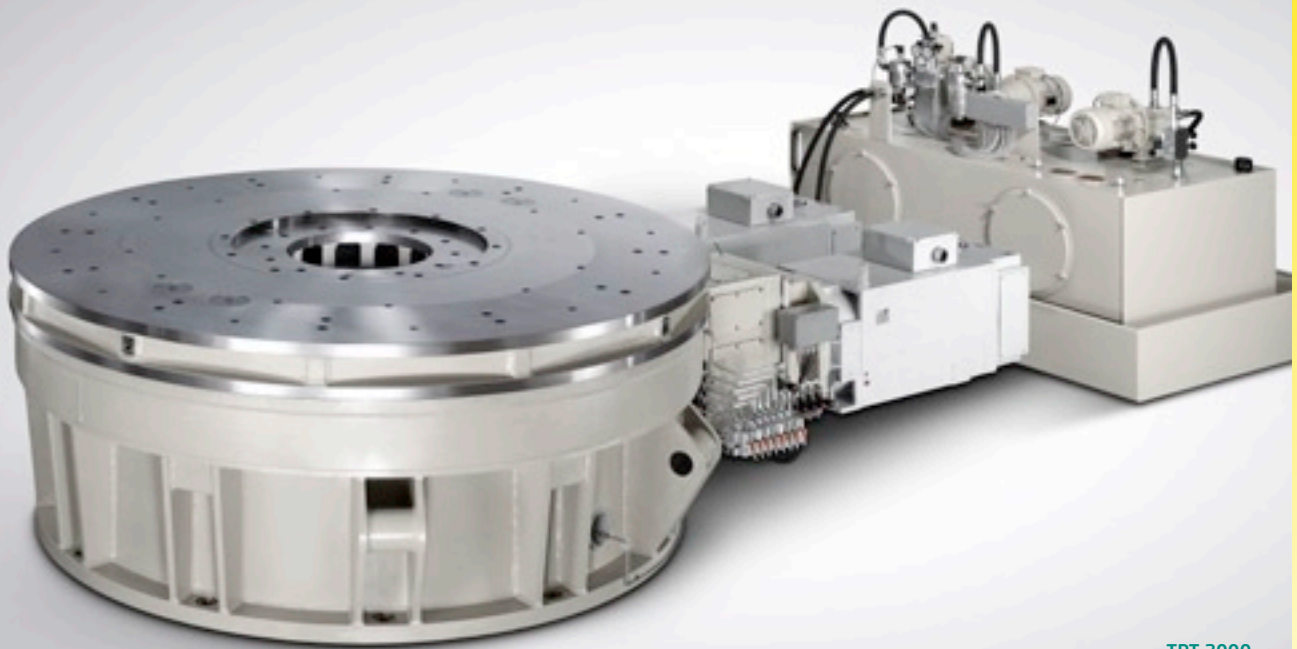
The Maschinenfabrik Eimeldingen GmbH, a specialist of world-wide renown in precision rotary tables and pallet changer systems, successfully joined the Rückle group in 2004. With this strategic acquisition the company aimed to extend its own production range in the field of standard rotary tables for machining centers and milling machines by absolute high-end applications in tailored machine building. As a result, the customers can now be satisfied in almost

all their requirements in terms of dimension, load capacity and performance as well as an unique flexibility and the best ease of variation ever.



With the acquisition of Fördertechnik Mayer's know-how in 2009 Rückle further extended its portfolio in the state-of-the-art conveying and pallet systems sector.

# Products

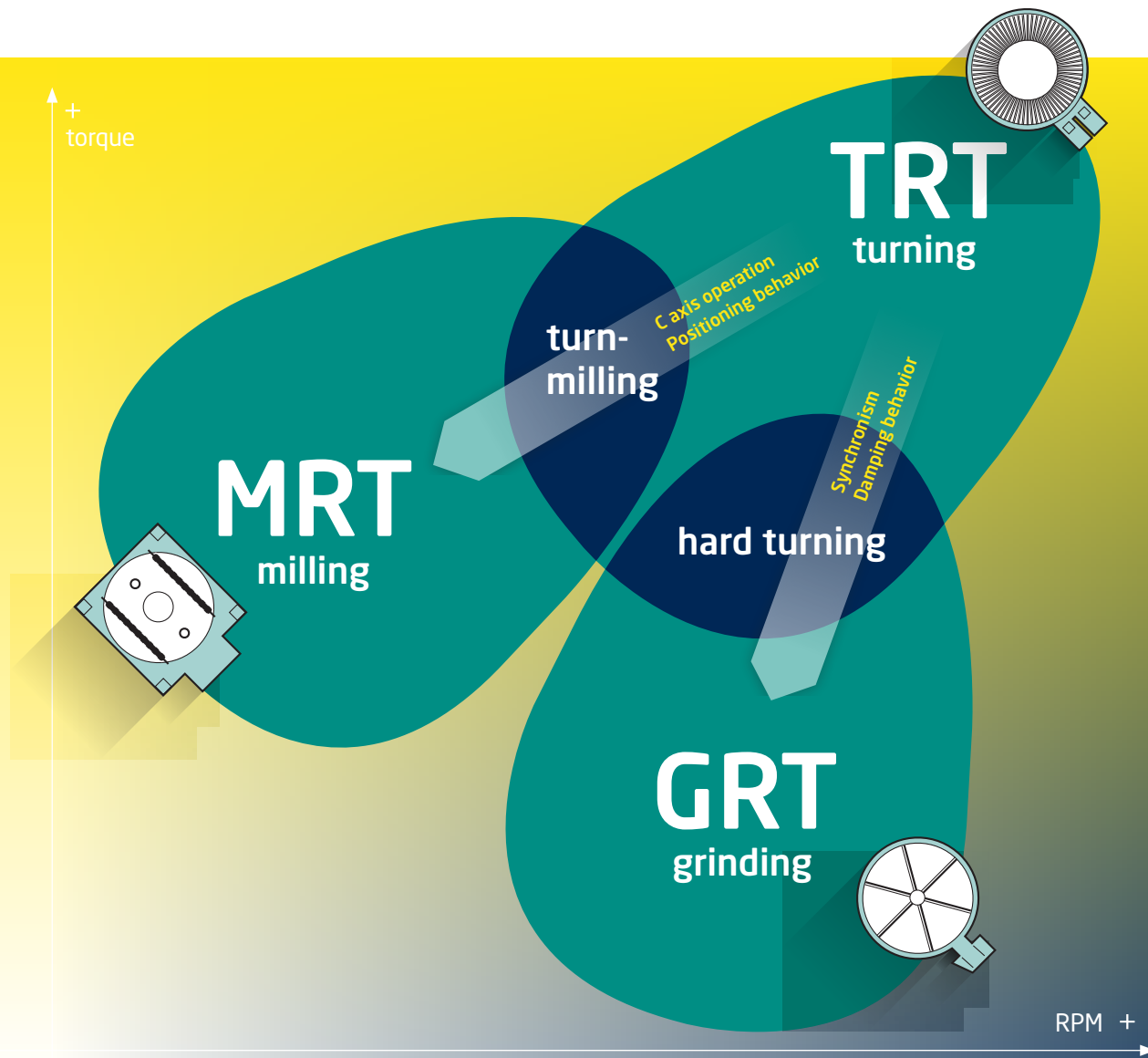


TRT 2000  
ø 3,000 mm, 2×71 KW, 60,000 Nm, 60 t, 100 RPM

## Rotary axes and rotary tables

Within the Rückle group, the product field rotary axes and rotary tables is split up into three concise, clearly separated design series which, any on its own, refer to one of the three applications milling, grinding or turning.

We are also prepared to accept even such challenges arising from border-line applications like hard turning or turn-milling: No matter what the customer's special requirements are – Rückle has the solution.



## Rückle's series classification

The **GRT series** is ideally suited for use in vertical circular grinding machines in single column or gantry design. The table is fully integrated in the machine. The running features of the direct drive allow uniform rotary motion. Any construction size may have customized parameters.

The basically hydrostatic mounting in axial and radial directions provides excellent damping features and pin-point accuracy.

The **TRT series** is suited for vertical lathes and gantry-type milling machines. It can be designed as integrated axis, stand-alone variant or traversing unit, according to the customer's application.

The master-slave configuration provides an excellent control performance in positioning and milling operations. We also offer customized linear axes which perfectly suit your current application.

The **MRT series** is designed for bore, drill & mill machines in gantry or travelling column design and for machining centers. It is intended for milling, boring and drilling, in positioning and continuous operation. The design will always be tailored to the actual machine.

Variable mounting configurations within one and the same construction size allow for different load capacities. We also offer customized linear axes and pallet changer systems which perfectly suit your current application.

# Products



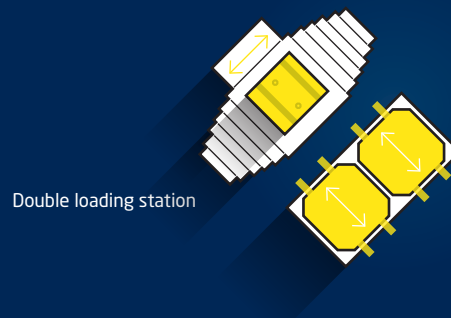
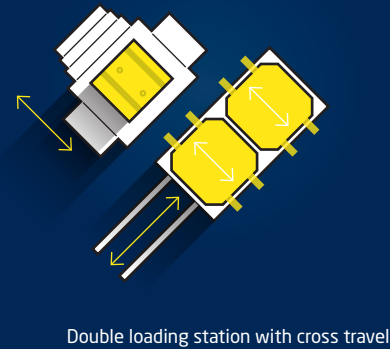
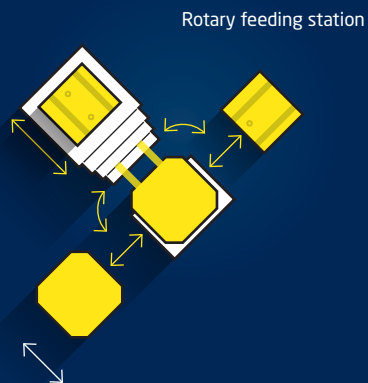
PW 1250 with MRT 1000

## Pallet changer systems and linear axes

Over the past years the Rückle group deliberately has enlarged its successful rotary tables product range by further components: With the acquisition of Maschinenfabrik Eimeldingen and of Fördertechnik Mayer's know how, Rückle now offers state-of-the-art pallet changer systems and linear axes.



Rückle's **pallet changer systems** have all a modular design which allows a huge variety of configurations. Customers may choose among several pallet chucking systems to be installed on the individual components (storing stations, locating stations, feeding stations etc.) which are available for pallet sizes up to  $2,500 \times 2,500$  mm (or larger upon request).



MRT 2000 with LA 2000 (3,000 × 3,000 mm, 100 t, W=2,000 mm)

Rückle's **linear axes** are suited for all rotary tables of the MRT and TRT series. The LM guides are available in different travels. Always tailored to the table's actual bearing diameter, the distance between the guides grant high stiffness of the complete system. The axes also feature generously dimensioned drive systems.

# Customer service & Technical support



## Always top-level

Customers of the Rückle group benefit from the advantages of this traditional company: a flat hierarchy, competent and reliable contact persons with optimal availability, a world-wide service and distribution network with diverse subsidiaries and agencies, an extremely flexible and effective company organization split up into small, self-contained divisions and a high in-house production depth – all this contributes to Rückle's success.





Get in touch with our technical service

**Hotline + 49 (0)73 82 – 9373 -99**

**Service-Fax + 49 (0)73 82 – 9373 -32**

**[service@rueckle.de](mailto:service@rueckle.de)**

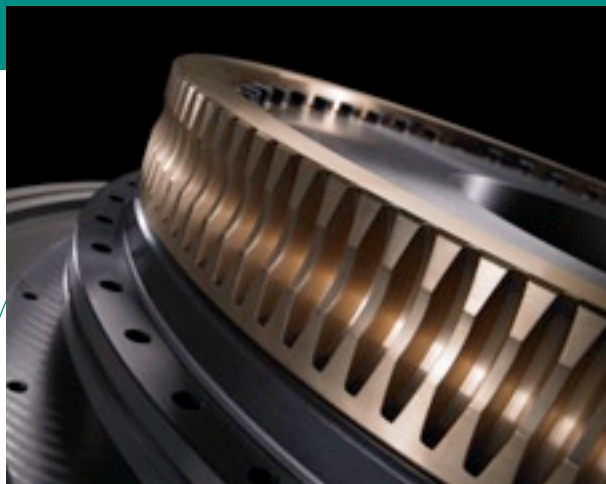


There is a need for reliable results even at an early stage of development due to short production cycles and increasing quality requirements.

The **Finite Elements Method (FEM)** has become an efficient simulation and optimization tool in this matter. Rückle's engineers specialize in FEM calculations. Using their state-of-the-art hard- and software they give customers support in optimizing their products - from the very first concept to series production. And of course Rückle also offers its customers the implementation of all parameters into any current control system, if required.

Ample experience gathered over several decades of successful activity for customers all over the world has resulted in a perfect customization of Rückle's **engineering**. Highly-skilled engineers, technicians and draftsmen participate actively in nearly all fields of design and development to satisfy customers' demands.

Some universities and polytechnical colleges, using state-of-the-art simulation tools, cooperate to continuously optimize control of the mechatronic drive concepts for Rückle's rotary tables, linear axes and swivel axes.





# Rückle worldwide

**Get in touch with us  
anytime and wherever you are.**

## North America Agency

### **Gadra Enterprises Inc.**

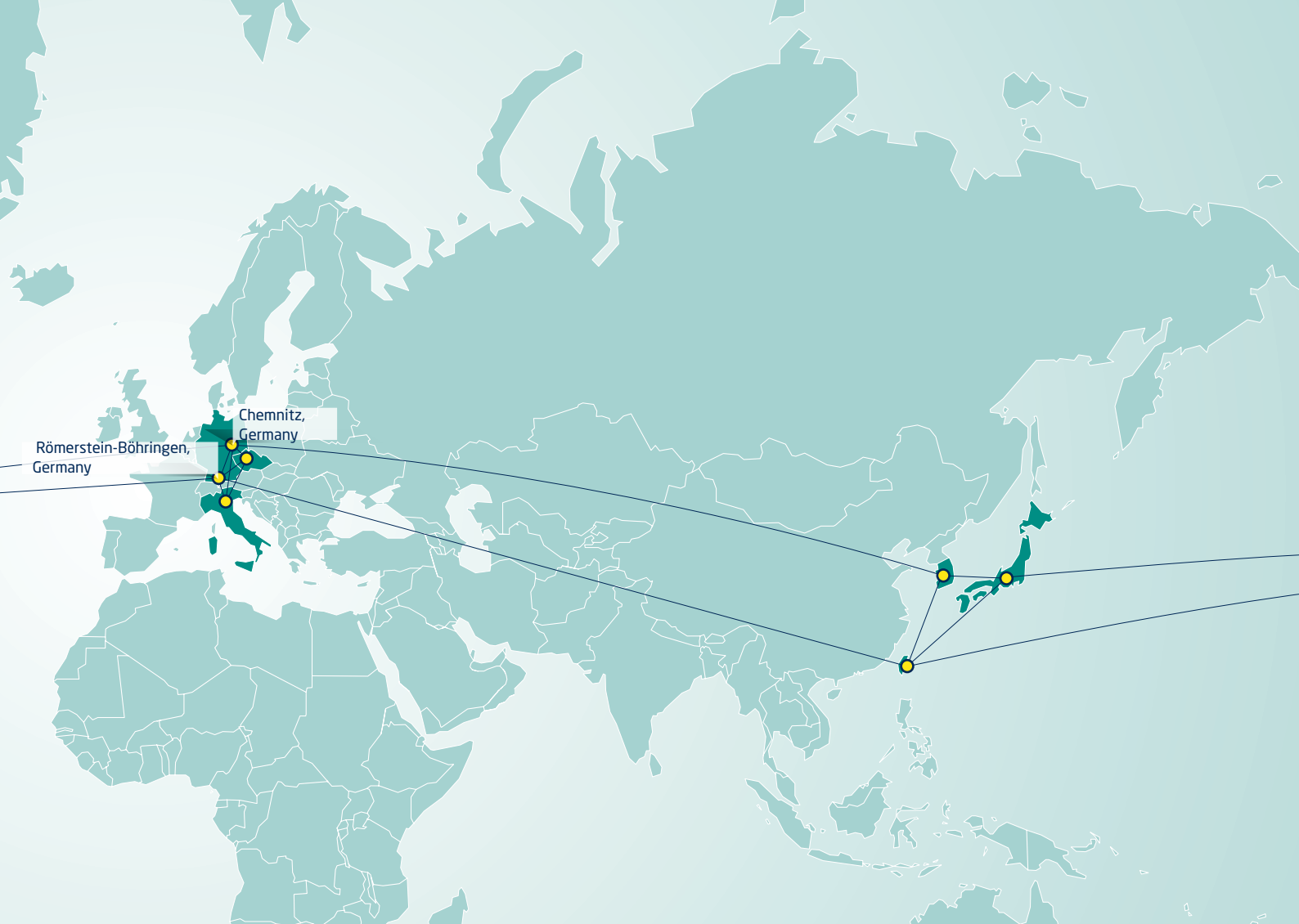
345, Airport Road

CA – L0S 1J0 Niagara-on-the-Lake, ON

Phone +1 905 – 688 -6151

Fax +1 905 – 688 -6414

[info@gadra.com](mailto:info@gadra.com)



### Western Europe Agency

#### **Giquattro s.r.l.**

Via Aristotele 24/5  
IT – 20128 Milano  
Phone +39 02 – 2553170  
Fax +39 02 – 2572846  
info@giquattro.com

### Eastern Europe Agency

#### **BIBUS S.R.O.**

Videnska 124  
CZ – 63927 Brno  
Phone +420 547 – 1253 -22  
Fax +420 547 – 1253 -10  
adam@bibus.cz

### Subsidiaries in Germany

#### **Rückle GmbH Werkzeugfabrik**

Zaininger Str. 13 -15  
D – 72587 Römerstein-Böhringen  
Phone + 49 (0)73 82 – 9373 -0  
Fax + 49 (0)73 82 – 9373 -49  
info@rueckle.de

#### **HEADTec GmbH**

Otto-Schmerbach-Str. 19  
D – 09117 Chemnitz  
Phone + 49 (0)371 – 334265 -0  
Fax + 49 (0)371 – 334265 -98  
info@headtec.de

#### **Vario-Fertigungstechnik GmbH**

Tuchschererstr. 17  
D – 09116 Chemnitz  
Phone + 49 (0)371 – 27828 -0  
Fax + 49 (0)371 – 27828 -49  
info@vario-ft.de

### Asian Subsidiary

#### **Rückle Asia Co. Ltd.**

**德揚工業有限公司**  
2 F., No.18, Hefeng 6<sup>th</sup> Rd., Xindian City  
Taipei County 23153 – Taiwan  
23153 台北縣新店市禾豐六路18號2樓  
Phone & Fax + 886 (0)2 – 2216 -3428  
Mobile +886 (0)956 – 074541  
wdeckert@rueckle.tw

### Asian Agencies

#### **Protec BIZ Tools and Machineries**

Kumkang Building, 4th floor 25  
Yangjae 2 (i)-dong  
KR – 246-5 Seocho-Ku. Seoul  
Phone +82 (0)2 – 57136 -97  
Fax +82 (0)2 – 57136 -98  
protec@protec-biz.com

#### **Climb Corporation**

3-2 Yotsuya, Shinjuku-Ku 1  
JP – 60-000 Tokyo  
Phone +81 (0)3 – 3226 -0941  
Fax +81 (0)3 – 3226 -0852  
eimeldingen@climb-1.co.jp

[www.rueckle-gruppe.de](http://www.rueckle-gruppe.de)

RÜCKLE